

AGRICULTURAL

IDEA BOOK



MEYER BUILDING®

TABLE OF CONTENTS

BUILT FOR SEASONS, MADE FOR GENERATIONS

PROJECT HIGHLIGHT #1 KOBER FAMILY FARM MACHINE SHED & COLD STORAGE

PROJECT HIGHLIGHT #2: NEWHOUSE FAMILY FARM INSULATED WORKSHOP

PROJECT HIGHLIGHT #3: CROP PERFORMANCE FERTILIZER STORAGE

PROJECT HIGHLIGHT #4: KOBER FAMILY FARM SHOW BARN

PROJECT HIGHLIGHT #5: KAEHR FAMILY FARM MACHINE SHED & COLD STORAGE

AGRICULTURAL GALLERY

ABOUT MEYER BUILDING

3

5

9

13

17

21

25

33



BUILT FOR SEASONS, MADE FOR GENERATIONS

This isn't your father's old pole barn. But it will be your children's—and their children's—because Midwest family farms pass down more than acreage. They pass down a way of life and the structures that support it. Purposeful post-frame agriculture buildings honor proud family farm heritage with long-lasting strength, and by making everyday chores simpler and seasons smoother.

Wide spans welcome big equipment. Durable steel and well-planned concrete stand up to weather and wear. Doors, power, and lighting land where the work happens, while layouts leave room for tomorrow's needs. We know the ag market and have it engrained in our roots. Built with care and meant to last, Meyer Building ag structures protect investments today and serve the next generation just as well.



MACHINE SHED & COLD STORAGE

KOBER FAMILY FARM

The Kober family needed a hard-working cold storage hub that looked sharp from the road and loaded fast on busy days. This post-frame build delivers open space for equipment, dependable weather protection, and a welcoming farmstead presence.

Meyer Building shaped the building shell and site details that matter most, including clean spans, smart drainage, and durable finishes, while setting part of the building up for an easy future shop conversion.





1. The 80'x160'x18' structure's extra-wide, 80' clear-span trusses open the floorplan for large implements and simple traffic flow.
2. Perma-Columns keep laminated posts out of the ground for decades-long durability.
3. Condensation barrier under the roof keeps equipment drip-free.
4. Full housewrap tightens the envelope and creates a water-resistant barrier.

5. High-metal fascia deepens the eave line and adds bold, modern curb appeal.
6. Wraparound 32'x8' corner porch with a unique gabled accent creates a distinctive farm-front entry.
7. Steel-wrapped porch posts and tight miters finish clean and resist wear.
8. Color-matched gutters and downspouts control runoff and blend with the palette.

9. The 40'x18' Double Sliding Door system includes an aluminum I-beam header, Ultra Glide track and trolley, and EZ Lock latches for smooth, secure operation.
10. A 28'x16' Clopay Energy Series overhead door with trolley operator and polyurethane insulation boosts durability and thermal performance.
11. Continuous concrete door footers with angle iron allow for smooth sliding and keep doors in place amid high winds and inclement weather.
12. A trench drain captures wash-down and meltwater before it extends into the building.

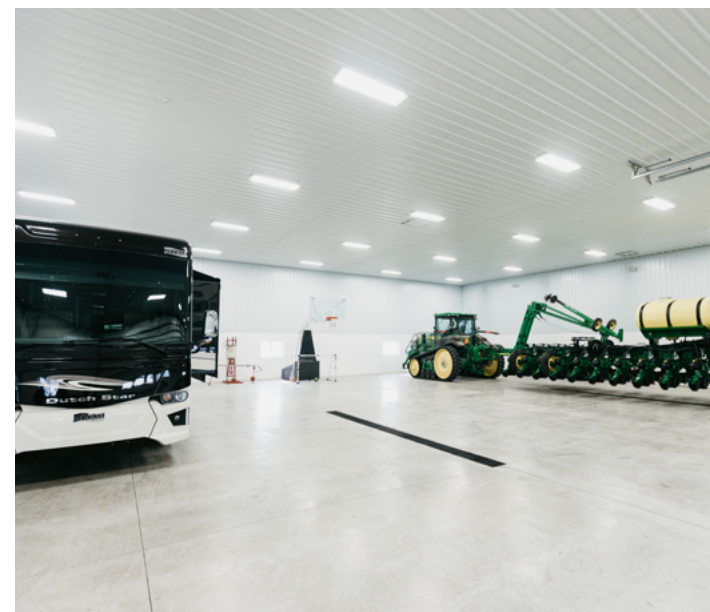
13. Eave and gable overhangs at 18" add shadow lines and push water away from walls.
14. Eleven insulated horizontal slider windows with screens and farm shutters add daylight and a traditional look.
15. Painted steel roofing and siding with stainless steel fasteners deliver long-term protection with low maintenance.
16. The interior splits into concrete and compacted stone bays so the family can run cold storage now and convert to an insulated shop later.

INSULATED WORKSHOP

NEWHOUSE FAMILY FARM

Repeat customers with multiple buildings on their property, the Newhouse family wanted a bright, four-season shop consistent with the farmstead's look that made daily maintenance easier. This post-frame workshop delivers clear spans, efficient heat retention, and high-quality finishes that reflect the family's commitment to maintaining their equipment.

Meyer Building framed the structure for longevity and flexibility, adding an 80-foot lean-to for future living space, durable liner panels inside, and details like color-matched gutters and steel-trimmed openings for a crisp, professional look.





1. An 80'x112'x20' shell with wide-span trusses clears floor space for equipment and work bays.
2. Precast, high-density concrete Perma-Columns isolate wood from soil contact to preserve durability year after year.
3. Housewrap lines the sheathing to keep insulation dry for steady, year-round performance.

4. Interior insulated walls create conditioned shop zones and a tidy mechanical and storage area.
5. PVC and steel walls include 8" fiberglass R25 insulation.
6. Ceiling features 12" blown cellulose R-38 insulation for year-round efficiency.
7. Painted steel siding with stainless steel fasteners resists corrosion and everyday wear.
8. An 80' lean-to runs the width of the building, planned for future finished living space.

9. Inset porch along the lean-to includes a finished ceiling, soffit miters, and steel-wrapped posts.
10. One 20'x18' and two 30'x18' overhead doors serve vehicles and equipment of all sizes.
11. Eight insulated walk doors place convenient entry points across the facade, and 13 thermopane slider windows light the space throughout.
12. Cupolas with weathervanes add classic farm character and roofline presence.

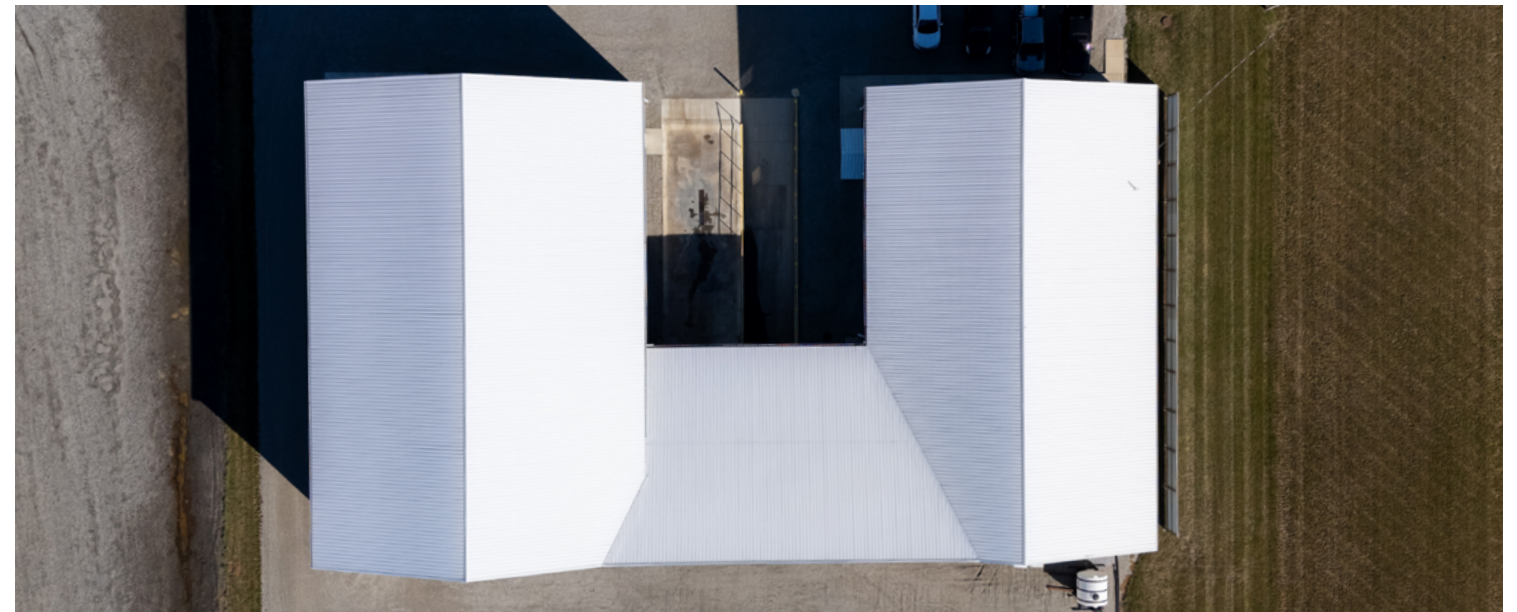
13. Low-profile, color-matched gutters and downspouts manage stormwater and snowmelt without distracting from the elevation.
14. Reinforced slab with a centered floor drain for quick wash-downs.
15. Concrete-filled steel bumper posts guard overhead door jambs from equipment and trailer hits.
16. Contrasting metal wainscot adds a crisp visual break around the base.

FERTILIZER STORAGE

CROP PERFORMANCE

Crop Performance needed a rugged, code-ready home for securing liquid fertilizer to plug into an existing campus and keep day-to-day traffic simple. This post-frame facility delivers clear space for tanks, service vehicles, and safe circulation.

Meyer Building designed and built the structure to strict fertilizer-storage standards, including spill containment strategies, and coordinated mechanical, electrical, plumbing, and interior finishes so the facility meets regulatory expectations and supports clean, efficient plant flow.





1. A 66'x100'x20' shell sets a clear, open work bay.
2. Perma-Columns keep the structure out of soil while resisting rot, corrosion, uplift, and frost heave for decades of service.
3. Floors slope to 72 LF of 24" wide concrete-poured containment trench drain that captures spills before they spread.
4. Two 14'x18' insulated Clopay 3720 overhead doors use jackshaft openers to clear headroom.
5. Code-required post-frame firewall extends 52' to separate occupancies and protect operations.
6. Walls house 6" fiberglass R-19 insulation behind white steel liner panels for clean, bright surfaces.
7. Ceiling insulation includes 12" blown R-45 cellulose above full steel liner panels.
8. Eight security-height fixed-lite thermopane windows flood the interior with daylight while preserving privacy and keeping glass safely above equipment traffic.
9. Exhaust fans and intake louvers keep air moving for adequate ventilation.
10. A PVC-lined bathroom with metal trim washes down easily.
11. A 10'x41' loft with 2x8 joists adds durable overhead storage and a clear work zone below.
12. Conference and office areas finished in T1-11 walls with trim to separate administration from the storage area.
13. Reinforced concrete flooring, curb walls, aprons, and a rebar grid support tanks and loading rigs.
14. Meyer Building coordinated mechanical, electrical, plumbing, and site details for a turn-key result.

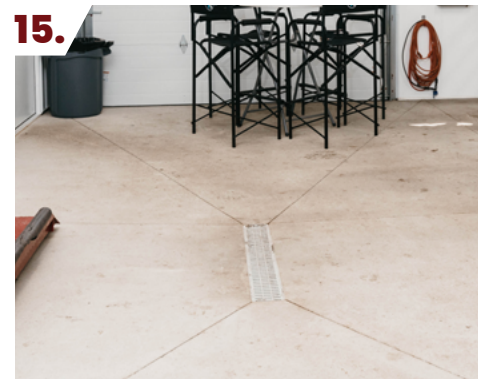
SHOW BARN

KOBER FAMILY FARM

The Kobers returned to Meyer Building as satisfied repeat customers in need of a clean, durable show barn to support their livestock and complete the family's ag property. This post-frame show barn delivers bright interiors, easy wash-down, and quick access through multiple doors for fast in-and-out on show days.

We organized the layout around daily chores and show prep. A dedicated feed room and a temperature-controlled cooler room sit close to the wash area and pens, so loading animals, staging feed, and moving equipment all follow short, direct paths. The result improves workflow, keeps spaces sanitary, and makes barn routines feel simple.





1. A 46'x48'x12' structure creates a compact, efficient footprint.
2. Perma-Columns set laminated posts on precast concrete to keep wood out of the ground.
3. Univent II vented ridge and 12" vented overhangs at eaves and gables.
4. Continuous housewrap creates a dedicated air barrier and lets walls dry to the exterior to preserve insulation.

5. Three insulated Clopay Intellicore 9200 overhead doors—measuring 10'x10', 10'x8', and 8'x8'—move livestock and equipment efficiently.
6. A roof cupola crowns the ridge with classic farmstead character and a clean, finished profile.
7. Five 4030 insulated horizontal-slider windows with screens and vinyl shutters pull in daylight and fresh air.
8. Exterior and interior walk doors trimmed in insulated steel for a clean, durable edge.

9. A 16'x6' gable porch adds a welcoming entry with steel-wrapped posts, a finished ceiling, and classic porch mitters.
10. White steel liner panel finishes the ceilings throughout for a bright, clean interior.
11. The cooler room uses I-Span PVC liner with PVC trim for hose-down cleanings.
12. The wash area also uses PVC liner where splashes, messes, and cleanups happen most often.
13. The feed room and adjacent spaces use white steel liner panels with metal trim for rugged daily use.

14. Fiberglass wall insulation and R-45 blown attic insulation hold temperatures steady for livestock comfort.
15. A 5" reinforced concrete floor with 12" grade beam supports pens and equipment, with trench drain set at the center for easy cleanup.
16. Footers under the overhead doors and a reinforced exterior apron keep thresholds straight through Midwest freeze-thaw cycles.
17. Studwall framing builds dedicated zones for the feed room, cooler, and wash area today while allowing easy reconfiguration for future storage or pens.

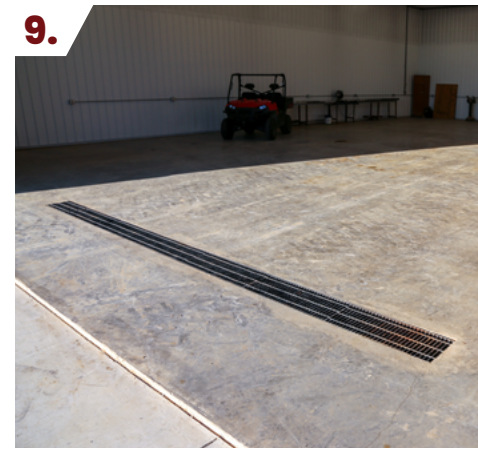
MACHINE SHED & COLD STORAGE

KAEHR FAMILY FARM

The Kaehr family farm needed a tough, everyday machine shed and storage space that also carved out a finished shop for maintenance and ongoing projects. The design pairs a big clear-span shell with smart interior build-outs so equipment moves easily and work stays clean and comfortable.

Meyer Building organized the plan around two zones, one for cold storage and one for a heated shop, then detailed the structure for added strength and long-term durability.





1. A 66'x120'x18' shell gives tractors and implements wide, clear bays.
2. Perma-Columns keep posts out of the ground for a permanent, moisture-proof foundation.
3. A 12" overhang at eaves and gables add shadow lines and push water away from walls.
4. Continuous vented ridge maintains airflow and helps dry the building.

5. Two 32'x18' double sliding doors, one with an I-Beam header, open wide lanes for moving machinery and equipment in and out.
6. A 26'x16' overhead door with an I-Beam header welcomes tall, frequent traffic.
7. Deep concrete slide-door footers (32'x12"x36") maintain door alignment as ground temperatures change with the seasons.
8. Reinforced aprons at each large door support daily tire loads.

9. A 12' trench drain inside the shop captures wash-down, spills, or leaks.
10. Interior partitions separate cold storage from a heated shop for daily work.
11. Shop walls use white steel liner for sound control and a distinct finished look in comparison to cold storage areas.
12. X-bracing in tall wall bays adds rigidity for Midwestern winds.

13. Visqueen and 8" fiberglass R-19 insulation in the shop walls, plus 12" blown R-45 insulation at the ceiling, hold heat and cut noise.
14. Four 4030 thermoslider windows welcome in daylight and fresh air.
15. Open-bottom loft adds a layer of storage above and below, doubling capacity without stealing floor space.
16. Stair access to loft for quickly reaching items stored above the shop floor.



Rinkenberger - Fertilizer Storage



Newhouse - Show Barn



Barger - Machine Shed & Cold Storage



Schurg - Insulated Workshop



Best's Family Farm



Fiechter Farm - Insulated Workshop



Vangordon - Machine Shed & Cold Storage



Fiechter Farms – Machine Shed & Cold Storage



Bettegnies– Machine Shed & Cold Storage



Binegar – Machine Shed & Cold Storage



Keystone – Fertilizer Storage



Heckber's Farm – Machine Shed & Cold Storage



Berning – Machine Shed & Cold Storage



Best's Family Farm



Oberley - Machine Shed & Cold Storage



Newhouse - Show Barn



Hendrickson Farm - Show Barn



Tonner - Machine Shed & Cold Storage



Watcher's Run - Horse Stable & Stall Barn



Bettegnies - Insulated Workshop



Keystone - Fertilizer Storage



Watcher's Run - Horse Stable, Stall Barn, & Riding Arena



Ellis - Accessory & Storage



Johnson - Show Barn



ABOUT MEYER BUILDING:

YOU WORK THE LAND, WE'LL BUILD THE BASE YOU CAN TRUST

Meyer Building designs and builds post-frame machine sheds, cold storage, insulated workshops, livestock show barns, and specialty ag facilities that work hard in every season. Since 1968, we have focused on practical layouts, durable materials, and details that stand up to Midwest weather and daily equipment traffic. Our in-house truss engineering and Perma-Column permanent foundations give each building strength from the ground up. Then our crews deliver on the details like durable steel skins, thoughtful layouts, and smart access.

We listen first, then plan around your chores, equipment, workflows, and future growth so doors, power, lighting, and concrete all land where you need them. We handle codes, permits, and full coordination with trades to keep your project moving while you stay focused on your farming operations.

Our mission is simple: empower people and put quality to work so your farm's next building delivers value from day one and keeps serving the next generation. When you are ready to add space that protects equipment, speeds turnarounds, and looks right on the homestead, we are ready to help.



260-565-3274



meyerbuilding.com



sales@meyerbuilding.com

